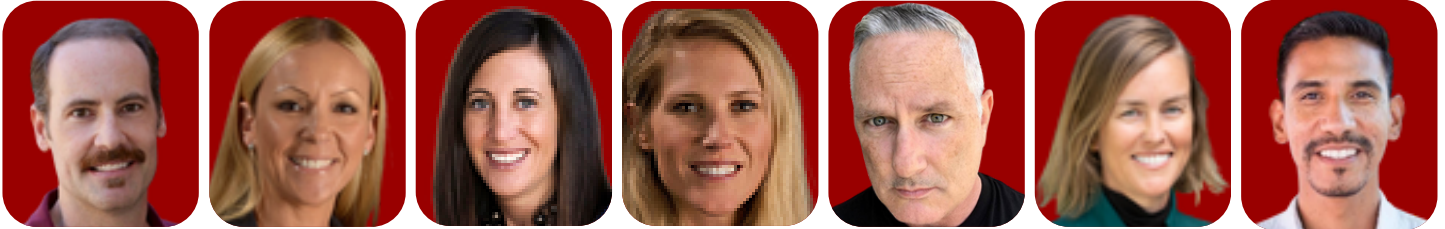


# INTERSECTIONAL APPROACHES TO ENVIRONMENTAL JUSTICE AND HEALTH EQUITY: Perspectives from Social Work and Nursing



Thursday, April 25, 2024 | Webinar via Zoom | 11:00am-12:15pm PST

**Moderator: Dawn Joosten-Hagye, PhD, LCSW, GC-C**

**Climate Change: The Ultimate Social Determinant of Health**

Michelle P. Zappas, DNP, FNP-BC

**ReDesignLA: Empowering Community-Based Organizations to Build Multi-Benefit Projects**

Carlos Moran, MSW Lecturer, Social Work

**Addressing the Tijuana Sewage Crisis: Toward Equity, Environmental Justice, and Sustainable Solutions**

Jennifer Lewis, PhD, LCSW and Rick Newmyer, MSW

**Spotlight on Sustainability in Academic Programs**

Michelle P. Zappas, DNP, FNP-BC

Director, Master of Science of Nursing Program

Jennifer Lewis, PhD, LCSW

Director, Master of Social Work Program

Director, Doctor of Social Work Program

**Moderator: Steve Gratwick, MSW, LCSW**

**Opportunities within USC**

Jill Sohm, PhD

Department Chair, Environmental Studies, USC Dornsife

**Q & A**

Climate change and pollution do not just effect the environment, they impact the health of the people who live in it. From microplastics in our water increasing cardiovascular disease to the health risks from wildfires and heat that disproportionately impact marginalized populations, it is clear that environmental justice is a health equity issue. Join USC faculty to explore issues central to social work and nursing, both now and into the future.

Learn more about sustainability and environmental justice initiatives at USC, in social work and beyond:

[USC Assignment: Earth](#)

[Grand Challenges for Social Work: Create social responses to a changing environment](#)

[International Federation of Social Workers: Global Climate Justice program](#)

[Click here to register](#)

Individuals with disabilities who need accommodations to attend may contact Elizabeth Gutierrez at [elizabeth.g@usc.edu](mailto:elizabeth.g@usc.edu).

